

StarWind FCoE Initiator: Using as FCoE Initiator

www.starwindsoftware.com

Copyright © StarWind Software 2008-2010. All rights reserved.

COPYRIGHT

Copyright © StarWind Software 2008-2010. All rights reserved. No part of this publication may be reproduced, stored in a retrieval system, or transmitted in any form or by any means, electronic, mechanical, photocopying, recording or otherwise, without the prior written consent of StarWind Software.

TRADEMARKS

“StarWind”, “StarWind Software” and the StarWind and the StarWind Software logos are trademarks of StarWind Software which may be registered in some jurisdictions. All other trademarks are owned by their respective owners.

CHANGES

The material in this document is for information only and is subject to change without notice. While reasonable efforts have been made in the preparation of this document to assure its accuracy, StarWind Software assumes no liability resulting from errors or omissions in this document, or from the use of the information contained herein. StarWind Software reserves the right to make changes in the product design without reservation and without notification to its users.

TECHNICAL SUPPORT AND SERVICES

If you have questions about installing or using this software, check this and other documents first - you will find answers to most of your questions here or there. If you need further assistance, please contact us.

Table of Contents

Introduction.....	4
Adding new device.....	5
Removing existing device.....	10

Guide

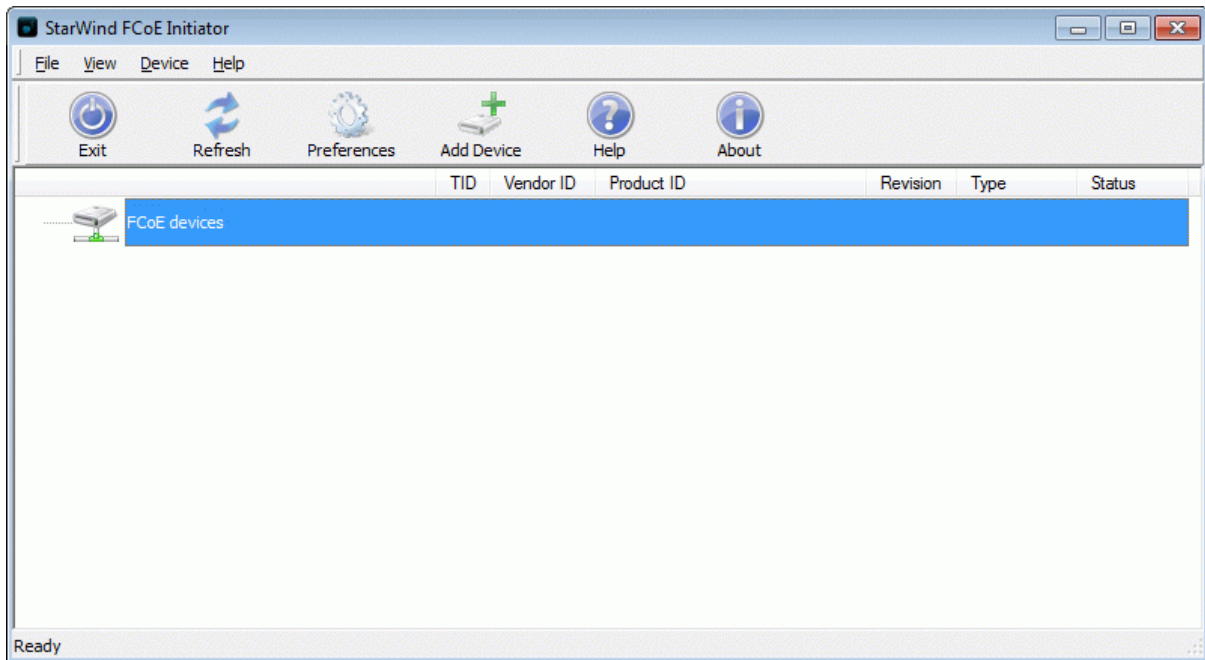
Introduction

Fibre Channel over Ethernet (FCoE) is an encapsulation of Fibre Channel packets over Ethernet networks. This allows Fibre Channel to leverage 10 Gigabit Ethernet networks while preserving the Fibre Channel protocol. FCoE maps Fibre Channel natively over Ethernet while being independent of the Ethernet routing scheme.

StarWind FCoE Initiator fully implements Fibre Channel-over-Ethernet client side protocol enabling you to connect to remote storage appliances such as those developed by Qlogic and Cisco. **StarWind FCoE Initiator** support enables connectivity to remote storage devices over a standard Ethernet network, regardless of where the device resides. With **StarWind FCoE Initiator** and Fibre Channel-over-Ethernet you can gain full access to a device, as though the device was installed on a local machine.

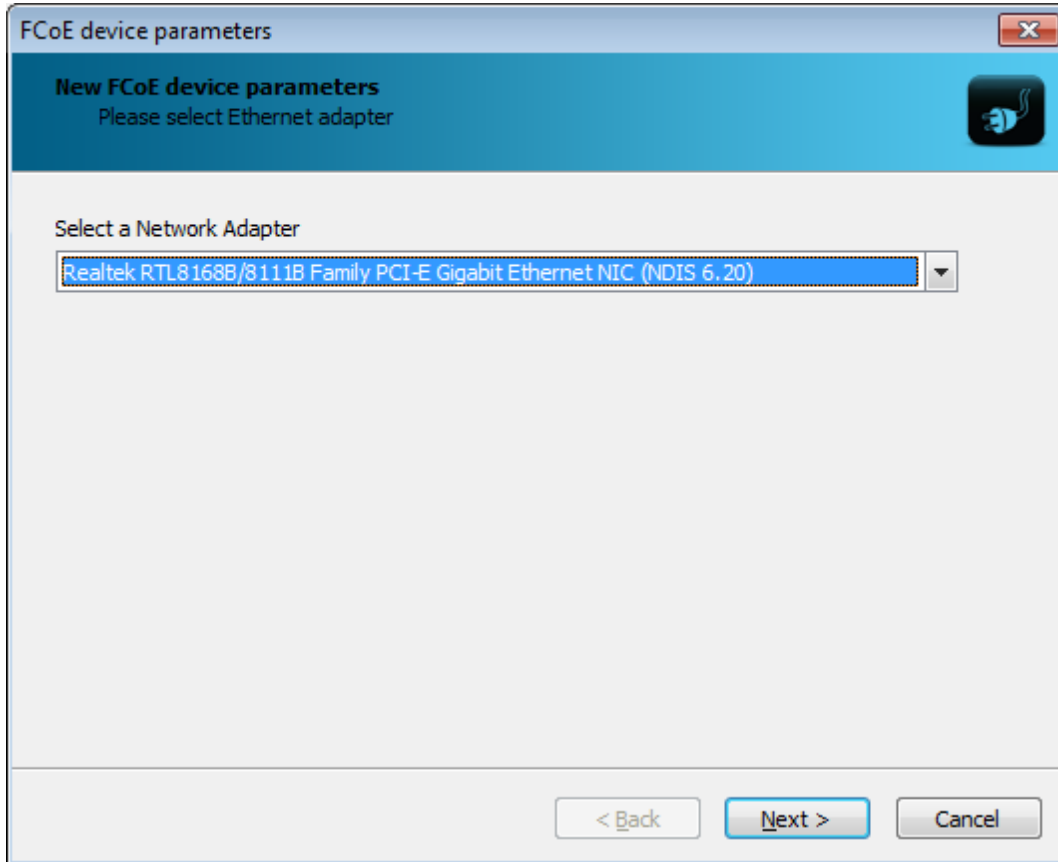
Adding new device

Launch the **StarWind FCoE Initiator** control application by selecting **Start->All Programs->StarWind Software->FCoE Initiator->FCoE Initiator**. After the program is started its icon appears in the system tray. Double click the icon with the left mouse button or single click it with the right mouse button and select **Start Management** item from the pop-up menu. You'll see a picture like the one below:



Select **Add Device** menu item from **Device** drop down menu or just press **Add Device** button on the application tray bar. New device installation wizard (see next page for the image) will appear.

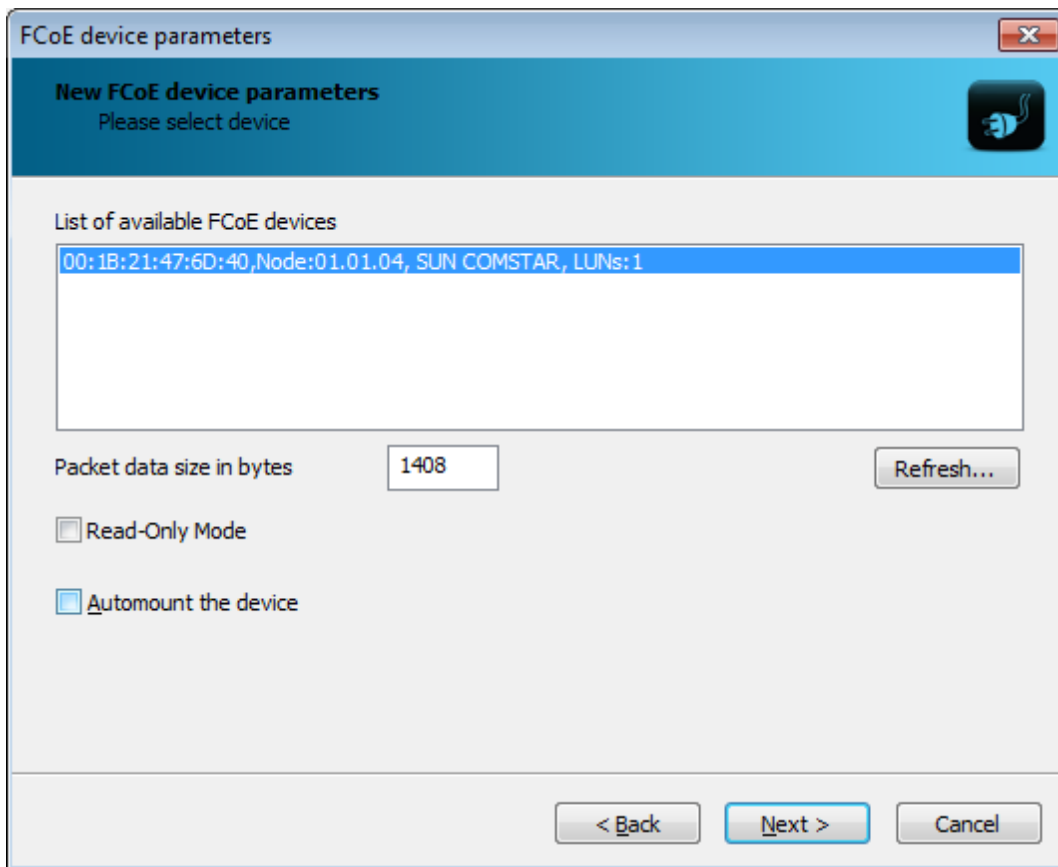
On the first step of the **New Device Installation Wizard** please select network adapter you wish to use to connect to the FCoE device.



Press **Next** button to continue.

On the second step of the Add Device Wizard specify the parameters of the FCoE device that you want to add:

- Select the device you want to add from the **List of the available devices**;
- **Automount disk** - if selected, the device is automatically re-created when you restart your computer. It means that an FCoE device becomes available right after your computer boots and Windows starts.
- Select **Read-Only Mode** if you want to enable read-only access to the FCoE device you are mounting.

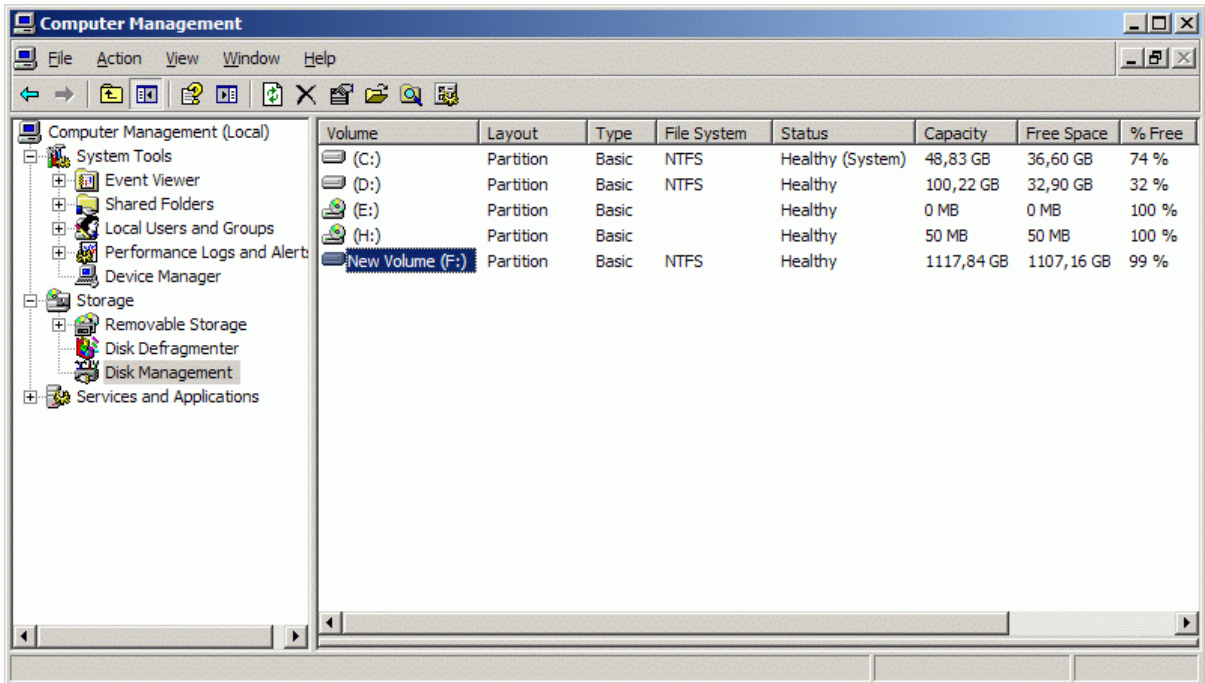
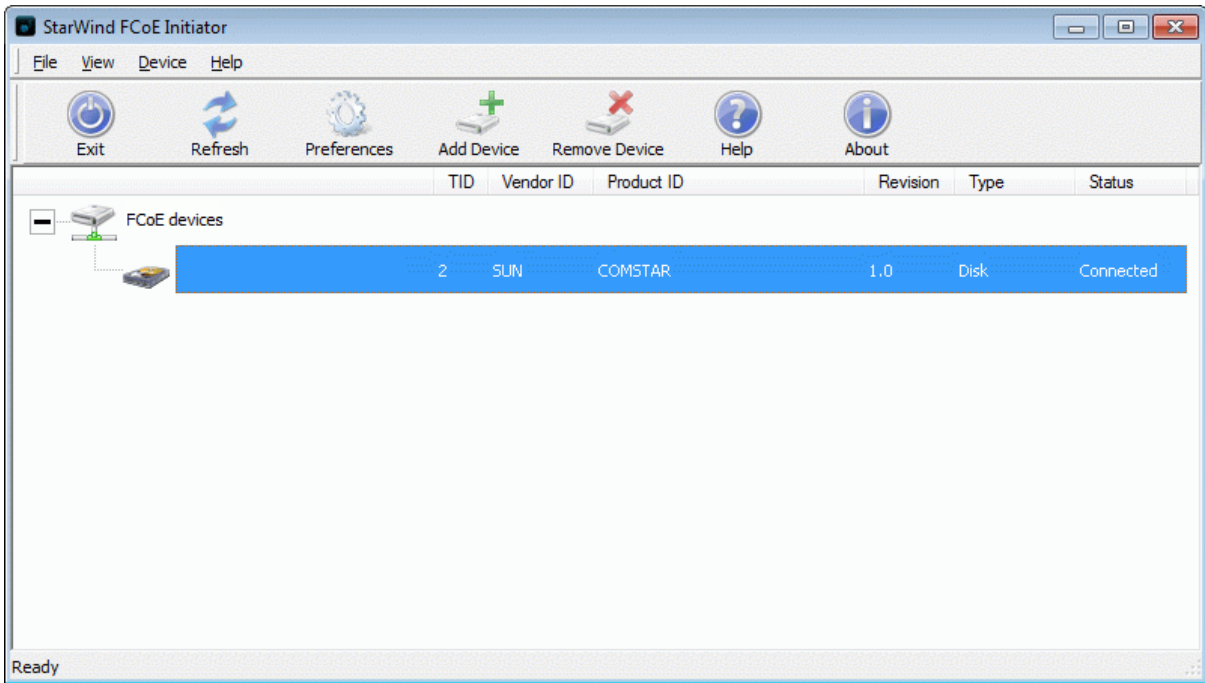


Press **Next** to continue.

On the last step of the **New Device Installation Wizard** please confirm the installation results. If the new FCoE device was installed correctly, it should appear as a new disk volume in your system. Right after that you will be able to access installed FCoE device as an ordinary disk volume.

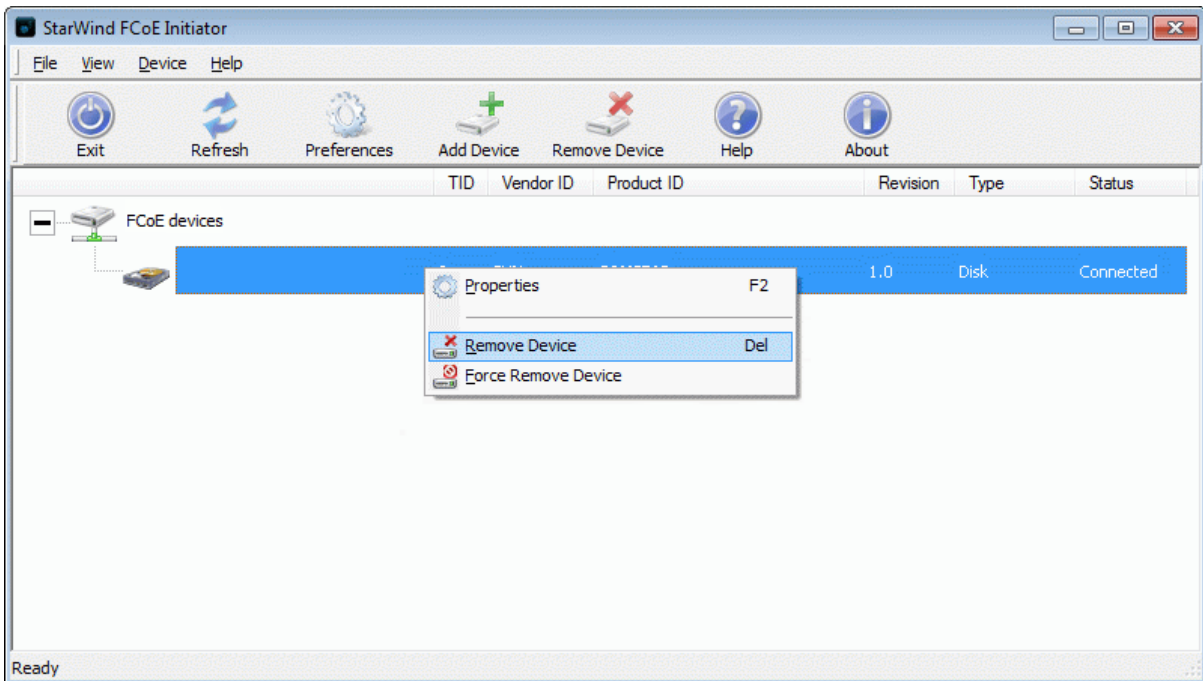


Press **Finish** button.



Removing existing device

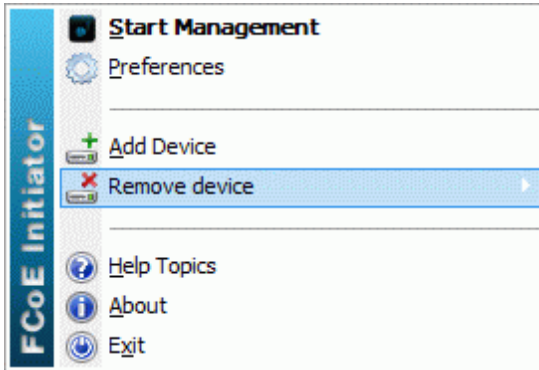
In the **StarWind FCoE Initiator** control application please select the device you wish to remove and click it with the right mouse button.



Select **Remove Device** menu item from the pop-up menu that appears.

Use the **Force Remove Device** if you cannot remove a device in a normal way (e.g. it is locked by some application or process). However it is not recommended to use the **Force Remove Device** feature as it may cause loss of the data and general system instability.

Alternatively you can remove a device by doing the following: right click **StarWind FCoE Initiator** icon in the system tray and find the device you wish to remove.



Contacts

Support: www.starwindsoftware.com/support
Support Forum: www.starwindsoftware.com/forums
Sales E-mail: sales@starwindsoftware.com

US Headquarters

Direct phone number: 1-617-449-7717
Fax: 1-617-507-5845

EMEA, APAC

Direct phone numbers: +44-0-2071936727
+44-0-2071936350
Voice Mail: 1-866-790-2646

StarWind Software Inc.
40 Mall Rd., Burlington
MA 01803, USA
www.starwindsoftware.com